



Matthew Phelps

7th - 24th May

Matthew Phelps

7th - 24th May 2014

Reception: Saturday 10th May 2 - 5.30pm

Highgate Contemporary Art

26, Highgate High Street, London N6 5JG 020 8340 7564 info@highgateart.com www.highgateart.com

Matt Phelps paints potent and highly concentrated images. His entrancement with nature, its moods and atmospheres, be it the broad expansiveness of marsh lands, the reflective qualities of snaking waters beneath huge skies or more isolated places, close to wilderness, is depicted with an imaginative flair which at times approaches abstraction.

Intimations of humankind come not in the shape of people or habitations but in the form of the age old practice of managing the land, winding paths, boundary trees, forest clearance and this is the time when Matthew's presence is also most felt. What we get from these depictions is a sense of enclosure, of portals into the landscape, capturing the essential scene before him and it is always mysterious.

Jane Hill



Painting II oil on board 48 x 36 ins



Felbrigg I oil on board 36 x 48 ins



Marshland II oil on canvas 40 x 40 ins

“Over the past 2 years I have tried to shake off some of the bad habits, the conventions that I have picked up and allowed to become ingrained into my practice. That overly controlling mark, the need to describe, that motif that keeps appearing without justifying itself. I have tried to develop a way of working that recognises the potential of the chance mark. I have found myself drawn into a process of un-painting areas, what remains are stubborn, resistant passages of paint that carry that raw quality of mark that I am looking for.”



Iona Isle oil on gesso on panel 36 x 48 ins

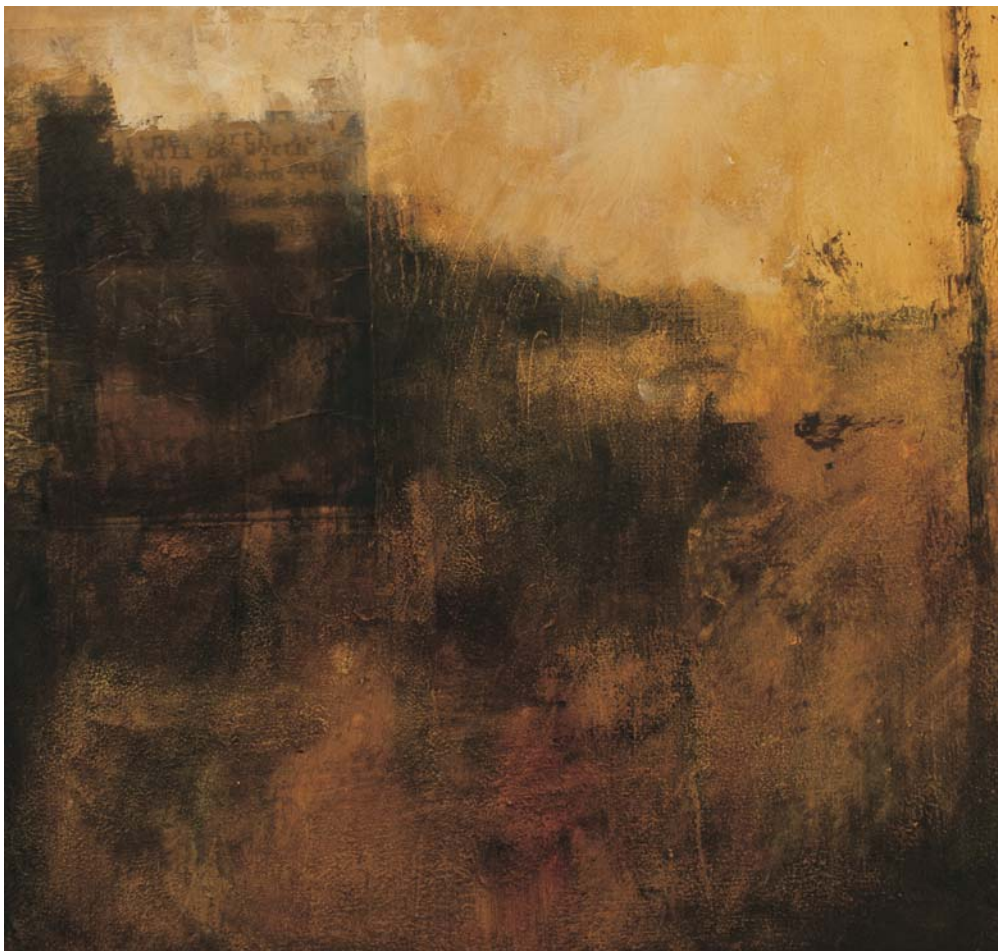
“I really enjoy being an art teacher. Once all the paperwork has been buried under the landslide of clutter in my office I can get on with drawing, painting and talking art. That daily conversation with students and colleagues has enabled me to rethink what I thought I knew about art.”



Forest Clearing III oil on board 48 x 36 ins



Forest Clearing IV oil on board 48 x 36 ins



Painting V oil and mixed media on board 20 x 20 ins

The motifs and conventions picked up over 20 years of trying to paint have not disappeared. The trees, horizon lines and cloud forms are still present. But they do not serve as pointers to aid recognition of place. They are my attempt to record an emotional register; they are my attempts to capture in paint a still, quiet world that I find in certain poetry, walking and in woods and landscapes."



Drawing I mixed media 24 x 18 ins



Drawing II mixed media 24 x 18 ins



Forest clearing oil and mixed media on board 42 x 52 ins



Painting / oil on board 48 x 36 ins

Highgate Contemporary Art



Marshland oil on board 24 x 60 ins

26, Highgate High Street, London N6 5JG 020 8340 7564 info@highgateart.com www.highgateart.com
Tuesday - Saturday 10.30am - 6pm. Or by appointment. Archway underground. Buses: 143, 210, 271